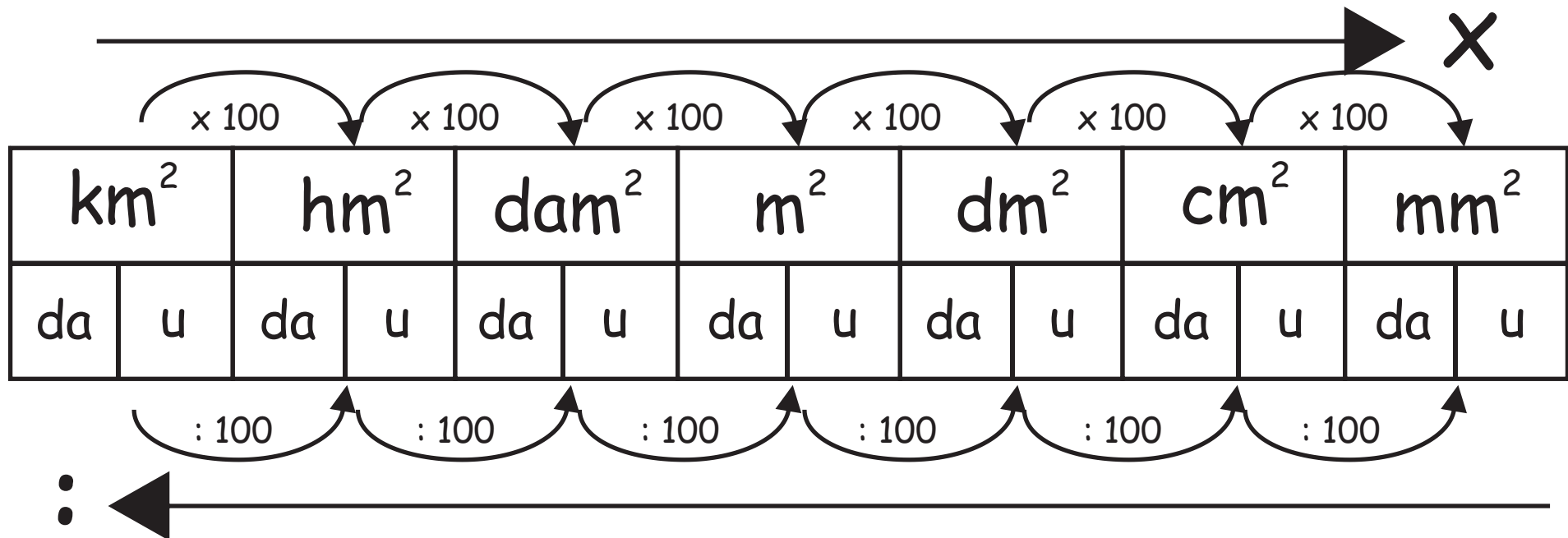


MISURE DI SUPERFICIE

MULTIPLI				SOTTOMULTIPLI			
km^2	hm^2	dam^2	m^2	dm^2	cm^2	mm^2	
chilometro quadrato	ettometro quadrato	decametro quadrato	metro quadrato	decimetro quadrato	centimetro quadrato	millimetro quadrato	
da	u	da	u	da	u	da	u
1.000.000 m^2	1.0.000 m^2	100 m^2	1 m^2	0,01 m^2	0,0001 m^2	0,000001 m^2	



MISURE DI SUPERFICIE

MULTIPLI				SOTTOMULTIPLI		
km^2	hm^2	dam^2	m^2	dm^2	cm^2	mm^2
chilometro quadrato	ettometro quadrato	decametro quadrato	metro quadrato	decimetro quadrato	centimetro quadrato	millimetro quadrato
da u	da u	da u	da u	da u	da u	da u
1.000.000 m^2	1.0.000 m^2	100 m^2	1 m^2	0,01 m^2	0,0001 m^2	0,000001 m^2

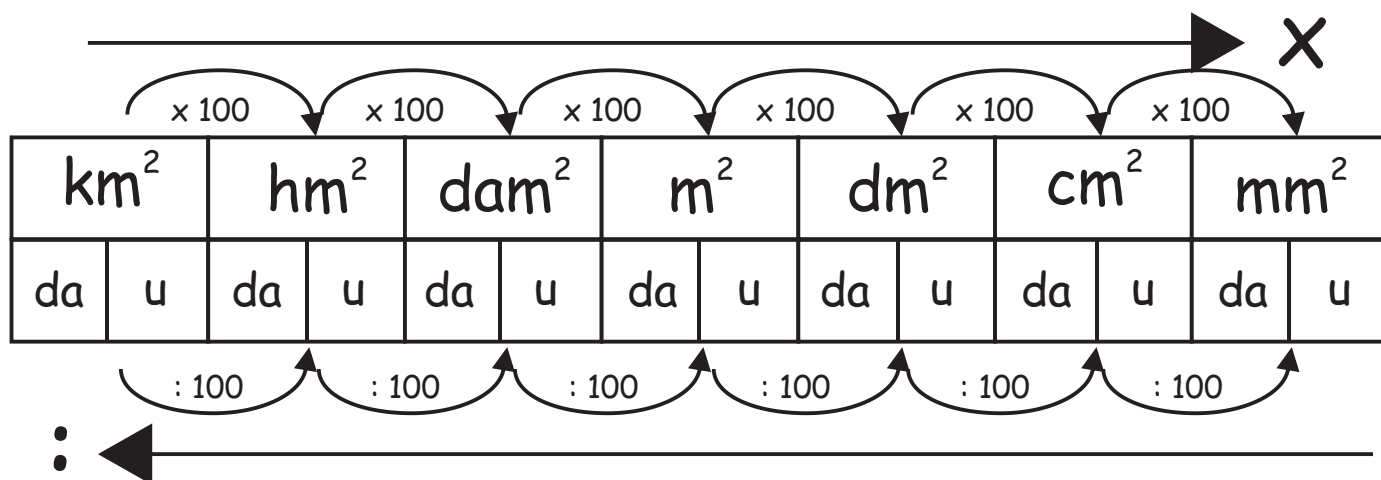
MISURE DI SUPERFICIE

MULTIPLI				SOTTOMULTIPLI		
km^2	hm^2	dam^2	m^2	dm^2	cm^2	mm^2
chilometro quadrato	ettometro quadrato	decametro quadrato	metro quadrato	decimetro quadrato	centimetro quadrato	millimetro quadrato
da u	da u	da u	da u	da u	da u	da u
1.000.000 m^2	1.0.000 m^2	100 m^2	1 m^2	0,01 m^2	0,0001 m^2	0,000001 m^2

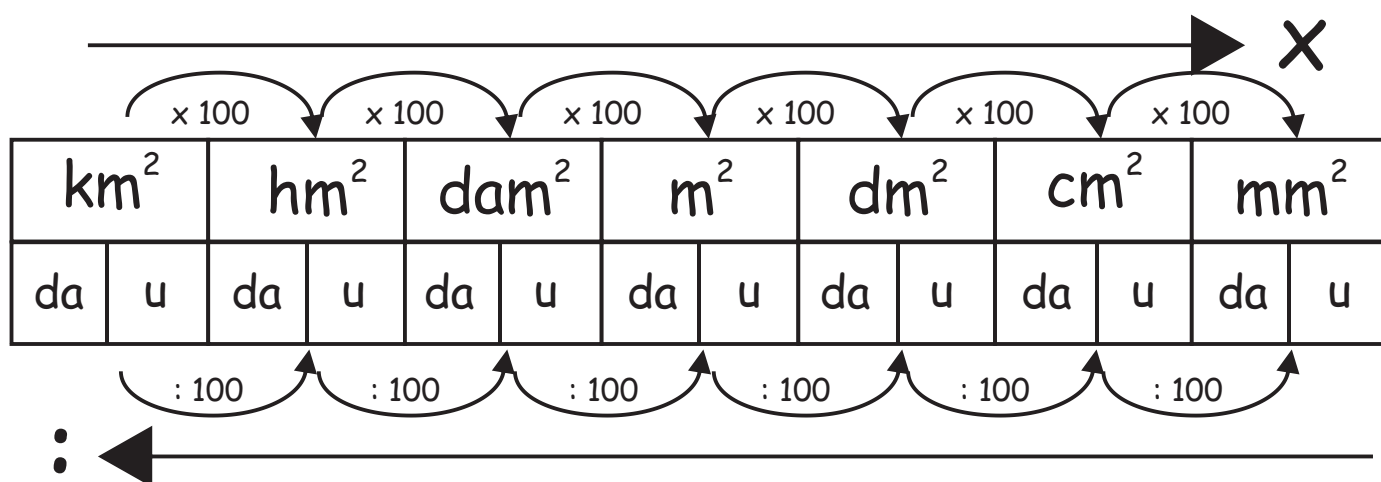
MISURE DI SUPERFICIE

MULTIPLI				SOTTOMULTIPLI		
km^2	hm^2	dam^2	m^2	dm^2	cm^2	mm^2
chilometro quadrato	ettometro quadrato	decametro quadrato	metro quadrato	decimetro quadrato	centimetro quadrato	millimetro quadrato
da u	da u	da u	da u	da u	da u	da u
1.000.000 m^2	1.0.000 m^2	100 m^2	1 m^2	0,01 m^2	0,0001 m^2	0,000001 m^2

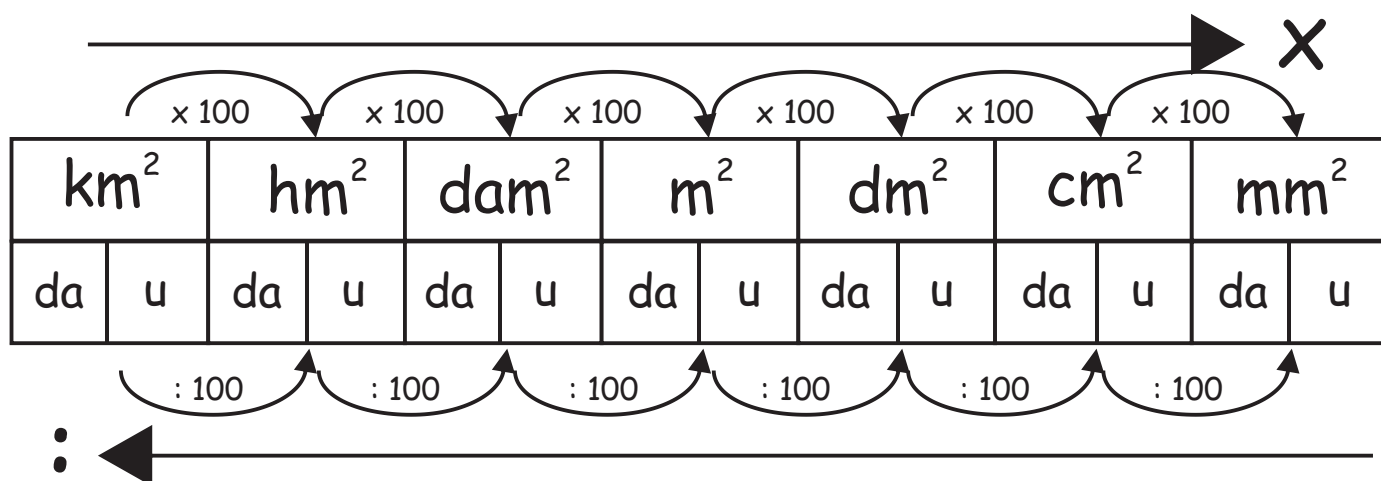
COME EFFETTUARE CAMBI TRA MISURE



COME EFFETTUARE CAMBI TRA MISURE



COME EFFETTUARE CAMBI TRA MISURE



1) EQUIVALENZE CON LE MISURE DI SUPERFICIE

a) Risolvi le seguenti equivalenze

$$5.000 \text{ hm}^2 = \underline{\hspace{2cm}} \text{ dam}^2$$

$$4,8 \text{ m}^2 = \underline{\hspace{2cm}} \text{ mm}^2$$

$$3,2 \text{ m}^2 = \underline{\hspace{2cm}} \text{ dam}^2$$

$$5,9 \text{ m}^2 = \underline{\hspace{2cm}} \text{ cm}^2$$

$$42.000 \text{ hm}^2 = \underline{\hspace{2cm}} \text{ hm}^2$$

$$6 \text{ m}^2 = \underline{\hspace{2cm}} \text{ dm}^2$$

$$64.000 \text{ hm}^2 = \underline{\hspace{2cm}} \text{ dam}^2$$

$$0,037 \text{ dm}^2 = \underline{\hspace{2cm}} \text{ cm}^2$$

$$670 \text{ dam}^2 = \underline{\hspace{2cm}} \text{ km}^2$$

$$0,052 \text{ dm}^2 = \underline{\hspace{2cm}} \text{ m}^2$$

$$3,4 \text{ m}^2 = \underline{\hspace{2cm}} \text{ hm}^2$$

$$8,9 \text{ m}^2 = \underline{\hspace{2cm}} \text{ dm}^2$$

$$560 \text{ dam}^2 = \underline{\hspace{2cm}} \text{ km}^2$$

$$73.000 \text{ hm}^2 = \underline{\hspace{2cm}} \text{ dam}^2$$

$$8 \text{ m}^2 = \underline{\hspace{2cm}} \text{ dm}^2$$



b) Risolvi le seguenti equivalenze

$$82.000 \text{ hm}^2 = \underline{\hspace{2cm}} \text{ dam}^2$$

$$0,089 \text{ dm}^2 = \underline{\hspace{2cm}} \text{ m}^2$$

$$680 \text{ dam}^2 = \underline{\hspace{2cm}} \text{ km}^2$$

$$5,7 \text{ m}^2 = \underline{\hspace{2cm}} \text{ mm}^2$$

$$0,062 \text{ dm}^2 = \underline{\hspace{2cm}} \text{ m}^2$$

$$0,02 \text{ dm}^2 = \underline{\hspace{2cm}} \text{ m}^2$$

$$65.000 \text{ hm}^2 = \underline{\hspace{2cm}} \text{ dam}^2$$

$$8,4 \text{ m}^2 = \underline{\hspace{2cm}} \text{ dam}^2$$

$$4,1 \text{ m}^2 = \underline{\hspace{2cm}} \text{ cm}^2$$

$$4,2 \text{ m}^2 = \underline{\hspace{2cm}} \text{ dm}^2$$

$$7,2 \text{ m}^2 = \underline{\hspace{2cm}} \text{ dm}^2$$

$$3,9 \text{ m}^2 = \underline{\hspace{2cm}} \text{ mm}^2$$

$$5.000 \text{ hm}^2 = \underline{\hspace{2cm}} \text{ dam}^2$$

$$18 \text{ m}^2 = \underline{\hspace{2cm}} \text{ dm}^2$$

$$4,8 \text{ m}^2 = \underline{\hspace{2cm}} \text{ mm}^2$$



2) EQUIVALENZE CON LE MISURE DI SUPERFICIE

a) Risolvi le seguenti equivalenze

$$0,04 \text{ dm}^2 = \underline{\hspace{2cm}} \text{ cm}^2$$

$$1,8 \text{ m}^2 = \underline{\hspace{2cm}} \text{ dm}^2$$

$$210 \text{ dam}^2 = \underline{\hspace{2cm}} \text{ dm}^2$$

$$2,4 \text{ m}^2 = \underline{\hspace{2cm}} \text{ dam}^2$$

$$0,037 \text{ dm}^2 = \underline{\hspace{2cm}} \text{ mm}^2$$

$$130 \text{ dam}^2 = \underline{\hspace{2cm}} \text{ hm}^2$$

$$60 \text{ dam}^2 = \underline{\hspace{2cm}} \text{ km}^2$$

$$0,061 \text{ dm}^2 = \underline{\hspace{2cm}} \text{ cm}^2$$

$$64.000 \text{ hm}^2 = \underline{\hspace{2cm}} \text{ km}^2$$

$$40 \text{ dam}^2 = \underline{\hspace{2cm}} \text{ hm}^2$$

$$0,015 \text{ dm}^2 = \underline{\hspace{2cm}} \text{ mm}^2$$

$$710 \text{ dam}^2 = \underline{\hspace{2cm}} \text{ dm}^2$$

$$610 \text{ dam}^2 = \underline{\hspace{2cm}} \text{ m}^2$$

$$9,8 \text{ m}^2 = \underline{\hspace{2cm}} \text{ mm}^2$$

$$6,8 \text{ m}^2 = \underline{\hspace{2cm}} \text{ cm}^2$$



b) Risolvi le seguenti equivalenze

$$700 \text{ dam}^2 = \underline{\hspace{2cm}} \text{ m}^2$$

$$720 \text{ dam}^2 = \underline{\hspace{2cm}} \text{ hm}^2$$

$$3,1 \text{ m}^2 = \underline{\hspace{2cm}} \text{ hm}^2$$

$$300 \text{ dam}^2 = \underline{\hspace{2cm}} \text{ m}^2$$

$$34.000 \text{ hm}^2 = \underline{\hspace{2cm}} \text{ km}^2$$

$$7,5 \text{ m}^2 = \underline{\hspace{2cm}} \text{ mm}^2$$

$$0,048 \text{ dm}^2 = \underline{\hspace{2cm}} \text{ cm}^2$$

$$520 \text{ dam}^2 = \underline{\hspace{2cm}} \text{ m}^2$$

$$0,024 \text{ dm}^2 = \underline{\hspace{2cm}} \text{ mm}^2$$

$$0,046 \text{ dm}^2 = \underline{\hspace{2cm}} \text{ mm}^2$$

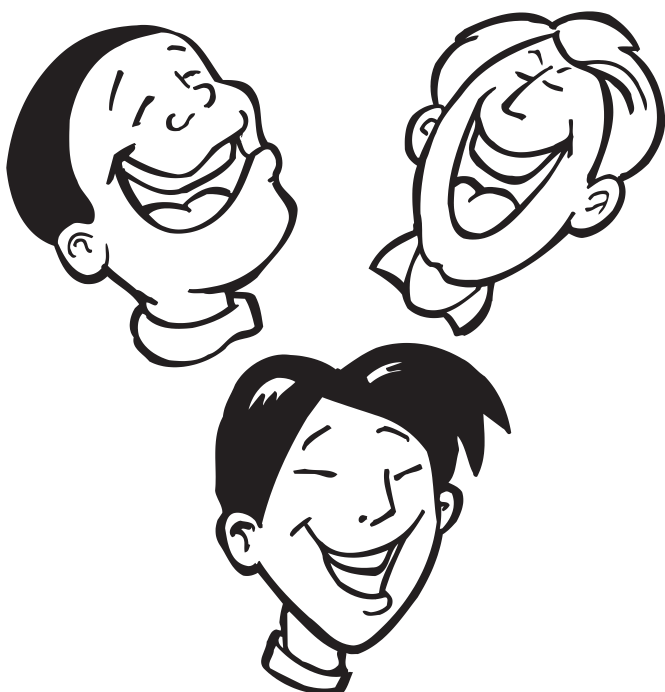
$$0,7 \text{ m}^2 = \underline{\hspace{2cm}} \text{ mm}^2$$

$$200 \text{ dam}^2 = \underline{\hspace{2cm}} \text{ dm}^2$$

$$530 \text{ dam}^2 = \underline{\hspace{2cm}} \text{ m}^2$$

$$550 \text{ dam}^2 = \underline{\hspace{2cm}} \text{ hm}^2$$

$$0,071 \text{ dm}^2 = \underline{\hspace{2cm}} \text{ m}^2$$



EQUIVALENZE CON LE MISURE DI SUPERFICIE

Equivalenze risolte

1) $\text{hm}^2 5.000 = \text{dam}^2 500.000$

$\text{m}^2 8 = \text{dm}^2 800$

$\text{m}^2 4,8 = \text{mm}^2 4.800.000$

$\text{hm}^2 82.000 = \text{dam}^2 8.200.000$

$\text{m}^2 3,2 = \text{dam}^2 0,032$

$\text{dm}^2 0,089 = \text{m}^2 0,00089$

$\text{m}^2 5,9 = \text{cm}^2 59.000$

$\text{dam}^2 680 = \text{km}^2 0,068$

$\text{hm}^2 42.000 = \text{dam}^2 4.200.000$

$\text{m}^2 5,7 = \text{mm}^2 5.700.000$

$\text{m}^2 6 = \text{dm}^2 600$

$\text{dm}^2 0,062 = \text{m}^2 0,00062$

$\text{hm}^2 64.000 = \text{dam}^2 6.400.000$

$\text{dm}^2 0,02 = \text{m}^2 0,0002$

$\text{dm}^2 0,037 = \text{cm}^2 3,7$

$\text{hm}^2 65.000 = \text{dam}^2 6.500.000$

$\text{dam}^2 670 = \text{km}^2 0,067$

$\text{m}^2 8,4 = \text{dam}^2 0,084$

$\text{dm}^2 0,052 = \text{m}^2 0,00052$

$\text{m}^2 4,1 = \text{cm}^2 41.000$

$\text{m}^2 3,4 = \text{hm}^2 0,00034$

$\text{m}^2 4,2 = \text{dm}^2 420$

$\text{m}^2 8,9 = \text{dm}^2 890$

$\text{m}^2 7,2 = \text{dm}^2 720$

$\text{dam}^2 560 = \text{km}^2 0,056$

$\text{m}^2 3,9 = \text{mm}^2 3.900.000$

$\text{hm}^2 73.000 = \text{dam}^2 7.300.000$

$\text{hm}^2 5.000 = \text{dam}^2 500.000$

$\text{m}^2 18 = \text{dm}^2 1800$

$\text{m}^2 4,8 = \text{mm}^2 4.800.000$

2) $\text{dam}^2 700 = \text{m}^2 70.000$

$\text{dam}^2 720 = \text{hm}^2 7,2$

$\text{m}^2 3,1 = \text{hm}^2 0,00031$

$\text{dam}^2 300 = \text{m}^2 30.000$

$\text{hm}^2 34.000 = \text{km}^2 340$

$\text{m}^2 7,5 = \text{mm}^2 7.500.000$

$\text{dm}^2 0,048 = \text{cm}^2 4,8$

$\text{dam}^2 520 = \text{m}^2 52.000$

$\text{dm}^2 0,024 = \text{mm}^2 240$

$\text{dm}^2 0,046 = \text{mm}^2 460$

$\text{m}^2 0,7 = \text{mm}^2 700.000$

$\text{dam}^2 200 = \text{dm}^2 2.000.000$

$\text{dam}^2 530 = \text{m}^2 53.000$

$\text{dam}^2 550 = \text{hm}^2 5,5$

$\text{dm}^2 0,071 = \text{m}^2 0,00071$

$\text{dm}^2 0,04 = \text{cm}^2 4$

$\text{m}^2 1,8 = \text{dm}^2 180$

$\text{dam}^2 210 = \text{dm}^2 2.100.000$

$\text{m}^2 2,4 = \text{dam}^2 0,024$

$\text{dm}^2 0,037 = \text{mm}^2 370$

$\text{dam}^2 130 = \text{hm}^2 1,3$

$\text{dam}^2 60 = \text{km}^2 0,006$

$\text{dm}^2 0,061 = \text{cm}^2 6,1$

$\text{hm}^2 64.000 = \text{km}^2 640$

$\text{dam}^2 40 = \text{hm}^2 0,4$

$\text{dm}^2 0,015 = \text{mm}^2 150$

$\text{dam}^2 710 = \text{dm}^2 7.100.000$

$\text{dam}^2 610 = \text{m}^2 61.000$

$\text{m}^2 9,8 = \text{mm}^2 9.800.000$

$\text{m}^2 6,8 = \text{cm}^2 68.000$

Esegui le equivalenze: misure di superficie.

$$\text{cm}^2 83 = \text{dm}^2 \underline{\hspace{2cm}}$$

$$\text{dm}^2 892 = \text{m}^2 \underline{\hspace{2cm}}$$

$$\text{km}^2 6,9 = \text{hm}^2 \underline{\hspace{2cm}}$$

$$\text{dam}^2 0,08 = \text{m}^2 \underline{\hspace{2cm}}$$

$$\text{cm}^2 1,8 = \text{dm}^2 \underline{\hspace{2cm}}$$

$$\text{cm}^2 60 = \text{mm}^2 \underline{\hspace{2cm}}$$

$$\text{mm}^2 818 = \text{m}^2 \underline{\hspace{2cm}}$$

$$\text{m}^2 747 = \text{mm}^2 \underline{\hspace{2cm}}$$

$$\text{dm}^2 0,51 = \text{cm}^2 \underline{\hspace{2cm}}$$

$$\text{cm}^2 526 = \text{mm}^2 \underline{\hspace{2cm}}$$

$$\text{cm}^2 9,4 = \text{dm}^2 \underline{\hspace{2cm}}$$

$$\text{dm}^2 25,3 = \text{m}^2 \underline{\hspace{2cm}}$$

$$\text{m}^2 173 = \text{dam}^2 \underline{\hspace{2cm}}$$

$$\text{mm}^2 813 = \text{cm}^2 \underline{\hspace{2cm}}$$

$$\text{km}^2 0,01 = \text{m}^2 \underline{\hspace{2cm}}$$

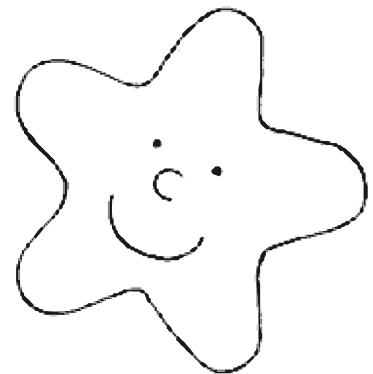
$$\text{dam}^2 0,02 = \text{m}^2 \underline{\hspace{2cm}}$$

$$\text{mm}^2 77 = \text{cm}^2 \underline{\hspace{2cm}}$$

$$\text{dm}^2 87,8 = \text{cm}^2 \underline{\hspace{2cm}}$$

$$\text{m}^2 41 = \text{dam}^2 \underline{\hspace{2cm}}$$

$$\text{m}^2 547 = \text{mm}^2 \underline{\hspace{2cm}}$$



Esegui le equivalenze: misure di superficie.

$$m^2 3,2 = \text{dam}^2 \underline{\hspace{2cm}}$$

$$km^2 0,46 = \text{hm}^2 \underline{\hspace{2cm}}$$

$$\text{dam}^2 62,8 = \text{hm}^2 \underline{\hspace{2cm}}$$

$$mm^2 67 = \text{cm}^2 \underline{\hspace{2cm}}$$

$$m^2 751 = \text{dm}^2 \underline{\hspace{2cm}}$$

$$\text{cm}^2 157 = \text{dm}^2 \underline{\hspace{2cm}}$$

$$\text{dam}^2 4 = \text{hm}^2 \underline{\hspace{2cm}}$$

$$\text{cm}^2 4,4 = \text{dm}^2 \underline{\hspace{2cm}}$$

$$m^2 0,48 = \text{dam}^2 \underline{\hspace{2cm}}$$

$$\text{dm}^2 0,56 = m^2 \underline{\hspace{2cm}}$$

$$\text{hm}^2 0,77 = \text{dam}^2 \underline{\hspace{2cm}}$$

$$m^2 6 = \text{mm}^2 \underline{\hspace{2cm}}$$

$$km^2 0,3 = \text{hm}^2 \underline{\hspace{2cm}}$$

$$\text{dam}^2 0,1 = \text{cm}^2 \underline{\hspace{2cm}}$$

$$km^2 0,07 = \text{hm}^2 \underline{\hspace{2cm}}$$

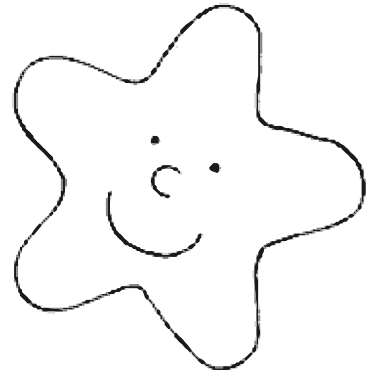
$$\text{dm}^2 47 = \text{cm}^2 \underline{\hspace{2cm}}$$

$$m^2 1,3 = \text{dam}^2 \underline{\hspace{2cm}}$$

$$km^2 7 = \text{hm}^2 \underline{\hspace{2cm}}$$

$$\text{hm}^2 0,03 = \text{km}^2 \underline{\hspace{2cm}}$$

$$km^2 0,09 = \text{hm}^2 \underline{\hspace{2cm}}$$



Esegui le equivalenze: misure di superficie.

$$\text{dam}^2 0,82 = \text{hm}^2 \underline{\hspace{2cm}}$$

$$\text{cm}^2 3 = \text{mm}^2 \underline{\hspace{2cm}}$$

$$\text{cm}^2 3,6 = \text{dm}^2 \underline{\hspace{2cm}}$$

$$\text{km}^2 0,39 = \text{hm}^2 \underline{\hspace{2cm}}$$

$$\text{dam}^2 3 = \text{hm}^2 \underline{\hspace{2cm}}$$

$$\text{hm}^2 0,15 = \text{km}^2 \underline{\hspace{2cm}}$$

$$\text{dam}^2 8,3 = \text{m}^2 \underline{\hspace{2cm}}$$

$$\text{km}^2 65 = \text{hm}^2 \underline{\hspace{2cm}}$$

$$\text{hm}^2 18,8 = \text{m}^2 \underline{\hspace{2cm}}$$

$$\text{m}^2 0,76 = \text{dm}^2 \underline{\hspace{2cm}}$$

$$\text{m}^2 5 = \text{cm}^2 \underline{\hspace{2cm}}$$

$$\text{cm}^2 511 = \text{dm}^2 \underline{\hspace{2cm}}$$

$$\text{dm}^2 0,06 = \text{mm}^2 \underline{\hspace{2cm}}$$

$$\text{cm}^2 6 = \text{dm}^2 \underline{\hspace{2cm}}$$

$$\text{hm}^2 0,2 = \text{m}^2 \underline{\hspace{2cm}}$$

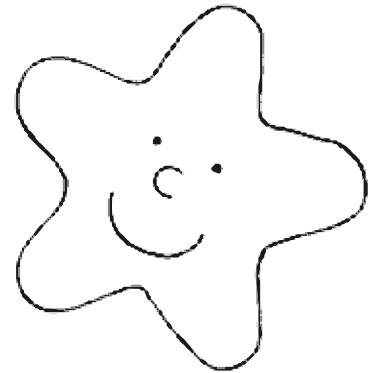
$$\text{hm}^2 16 = \text{km}^2 \underline{\hspace{2cm}}$$

$$\text{hm}^2 63,8 = \text{dam}^2 \underline{\hspace{2cm}}$$

$$\text{m}^2 65 = \text{dm}^2 \underline{\hspace{2cm}}$$

$$\text{km}^2 0,1 = \text{hm}^2 \underline{\hspace{2cm}}$$

$$\text{m}^2 0,02 = \text{dm}^2 \underline{\hspace{2cm}}$$



Esegui le equivalenze: misure di superficie.

$$\text{mm}^2 278 = \text{cm}^2 \underline{\hspace{2cm}}$$

$$\text{hm}^2 0,82 = \text{km}^2 \underline{\hspace{2cm}}$$

$$\text{m}^2 4,75 = \text{dm}^2 \underline{\hspace{2cm}}$$

$$\text{dam}^2 841 = \text{hm}^2 \underline{\hspace{2cm}}$$

$$\text{dam}^2 0,51 = \text{hm}^2 \underline{\hspace{2cm}}$$

$$\text{mm}^2 9 = \text{cm}^2 \underline{\hspace{2cm}}$$

$$\text{cm}^2 86 = \text{mm}^2 \underline{\hspace{2cm}}$$

$$\text{km}^2 0,04 = \text{dam}^2 \underline{\hspace{2cm}}$$

$$\text{dm}^2 91 = \text{cm}^2 \underline{\hspace{2cm}}$$

$$\text{mm}^2 226 = \text{cm}^2 \underline{\hspace{2cm}}$$

$$\text{dam}^2 42 = \text{hm}^2 \underline{\hspace{2cm}}$$

$$\text{m}^2 0,05 = \text{dm}^2 \underline{\hspace{2cm}}$$

$$\text{hm}^2 0,36 = \text{dam}^2 \underline{\hspace{2cm}}$$

$$\text{mm}^2 185 = \text{cm}^2 \underline{\hspace{2cm}}$$

$$\text{hm}^2 8,1 = \text{m}^2 \underline{\hspace{2cm}}$$

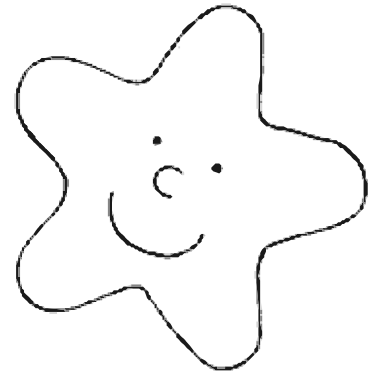
$$\text{cm}^2 9,8 = \text{dm}^2 \underline{\hspace{2cm}}$$

$$\text{m}^2 68 = \text{dm}^2 \underline{\hspace{2cm}}$$

$$\text{dam}^2 7,2 = \text{hm}^2 \underline{\hspace{2cm}}$$

$$\text{dm}^2 97,3 = \text{m}^2 \underline{\hspace{2cm}}$$

$$\text{dm}^2 0,8 = \text{mm}^2 \underline{\hspace{2cm}}$$



Esegui le equivalenze: misure di superficie.

$$\text{km}^2 0,06 = \text{m}^2 \underline{\hspace{2cm}}$$

$$\text{hm}^2 2 = \text{km}^2 \underline{\hspace{2cm}}$$

$$\text{km}^2 51 = \text{hm}^2 \underline{\hspace{2cm}}$$

$$\text{m}^2 0,06 = \text{dam}^2 \underline{\hspace{2cm}}$$

$$\text{cm}^2 7 = \text{m}^2 \underline{\hspace{2cm}}$$

$$\text{mm}^2 14 = \text{cm}^2 \underline{\hspace{2cm}}$$

$$\text{mm}^2 699 = \text{dm}^2 \underline{\hspace{2cm}}$$

$$\text{dm}^2 0,95 = \text{m}^2 \underline{\hspace{2cm}}$$

$$\text{mm}^2 1,09 = \text{cm}^2 \underline{\hspace{2cm}}$$

$$\text{m}^2 1,78 = \text{dam}^2 \underline{\hspace{2cm}}$$

$$\text{dam}^2 82 = \text{km}^2 \underline{\hspace{2cm}}$$

$$\text{m}^2 710 = \text{dam}^2 \underline{\hspace{2cm}}$$

$$\text{m}^2 76,2 = \text{dm}^2 \underline{\hspace{2cm}}$$

$$\text{hm}^2 0,11 = \text{m}^2 \underline{\hspace{2cm}}$$

$$\text{dam}^2 595 = \text{dm}^2 \underline{\hspace{2cm}}$$

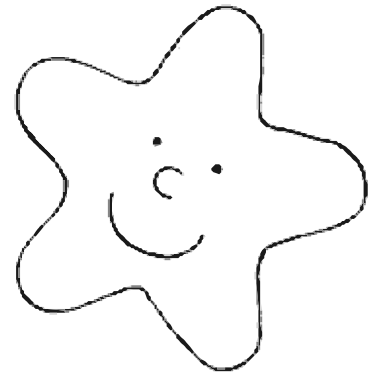
$$\text{dam}^2 699 = \text{m}^2 \underline{\hspace{2cm}}$$

$$\text{dam}^2 6,43 = \text{hm}^2 \underline{\hspace{2cm}}$$

$$\text{mm}^2 8 = \text{cm}^2 \underline{\hspace{2cm}}$$

$$\text{km}^2 0,31 = \text{hm}^2 \underline{\hspace{2cm}}$$

$$\text{cm}^2 0,2 = \text{mm}^2 \underline{\hspace{2cm}}$$



Esegui le equivalenze: misure di superficie.

damq 0,7 = hmq _____

kmq 0,45 = hmq _____

dmq 1 = dmq _____

mq 6,67 = dmq _____

cmq 5 = mmq _____

kmq 0,01 = hmq _____

hmq 5,4 = damq _____

cmq 24 = cmq _____

mq 5 = dmq _____

damq 59,5 = hmq _____

mmq 440 = cmq _____

mq 0,78 = dmq _____

damq 2 = hmq _____

kmq 2 = hmq _____

cmq 49 = dmq _____

damq 5,57 = hmq _____

hmq 5,43 = damq _____

dmq 0,28 = mq _____

mq 0,64 = dmq _____

dmq 1 = cmq _____

