

1) Metti in colonna e calcola ,
continua finché non trovi resto zero

$1.287 : 6 = \underline{\hspace{2cm}}$

$894 : 8 = \underline{\hspace{2cm}}$

$3.181,1 : 4 = \underline{\hspace{2cm}}$

$195,72 : 5 = \underline{\hspace{2cm}}$

$997,4 : 8 = \underline{\hspace{2cm}}$

$576,5 : 4 = \underline{\hspace{2cm}}$

$22,69 : 2 = \underline{\hspace{2cm}}$

$3.596,6 : 4 = \underline{\hspace{2cm}}$

$387,31 : 5 = \underline{\hspace{2cm}}$

$3,57 : 6 = \underline{\hspace{2cm}}$

$436,6 : 4 = \underline{\hspace{2cm}}$

$4.392 : 5 = \underline{\hspace{2cm}}$



2) Metti in colonna e calcola ,
continua finché non trovi resto zero

$5.528 : 5 = \underline{\hspace{2cm}}$

$1.541 : 5 = \underline{\hspace{2cm}}$

$3.791 : 2 = \underline{\hspace{2cm}}$

$1.293 : 6 = \underline{\hspace{2cm}}$

$2.976 : 5 = \underline{\hspace{2cm}}$

$5.242 : 4 = \underline{\hspace{2cm}}$

$2.431 : 5 = \underline{\hspace{2cm}}$

$4.052 : 8 = \underline{\hspace{2cm}}$

$1.379 : 2 = \underline{\hspace{2cm}}$

$1.293 : 4 = \underline{\hspace{2cm}}$

$2.439 : 6 = \underline{\hspace{2cm}}$

$7.857 : 5 = \underline{\hspace{2cm}}$



1) Metti in colonna e calcola con la prova:

$3,086 : 4 = \underline{\hspace{2cm}}$

$5,118 : 6 = \underline{\hspace{2cm}}$

$2,54 : 7 = \underline{\hspace{2cm}}$

$6,15 : 9 = \underline{\hspace{2cm}}$

$3,83 : 5 = \underline{\hspace{2cm}}$

$4,22 : 6 = \underline{\hspace{2cm}}$

$1,644 : 4 = \underline{\hspace{2cm}}$

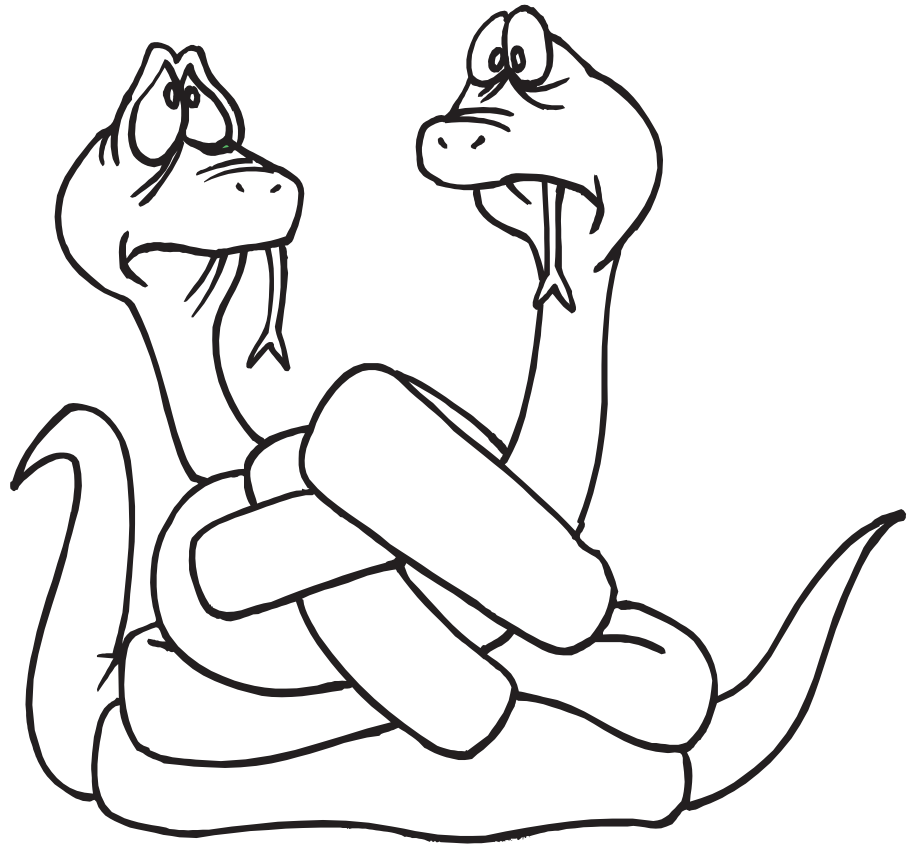
$4,17 : 8 = \underline{\hspace{2cm}}$

$4,68 : 9 = \underline{\hspace{2cm}}$

$5,774 : 7 = \underline{\hspace{2cm}}$

$1,77 : 5 = \underline{\hspace{2cm}}$

$3,434 : 8 = \underline{\hspace{2cm}}$



2) Metti in colonna e calcola con la prova:

$8447,37 : 5 = \underline{\hspace{2cm}}$

$4086,148 : 4 = \underline{\hspace{2cm}}$

$6582,61 : 2 = \underline{\hspace{2cm}}$

$63,4 : 8 = \underline{\hspace{2cm}}$

$6332,29 : 8 = \underline{\hspace{2cm}}$

$319,448 : 6 = \underline{\hspace{2cm}}$

$812,4 : 7 = \underline{\hspace{2cm}}$

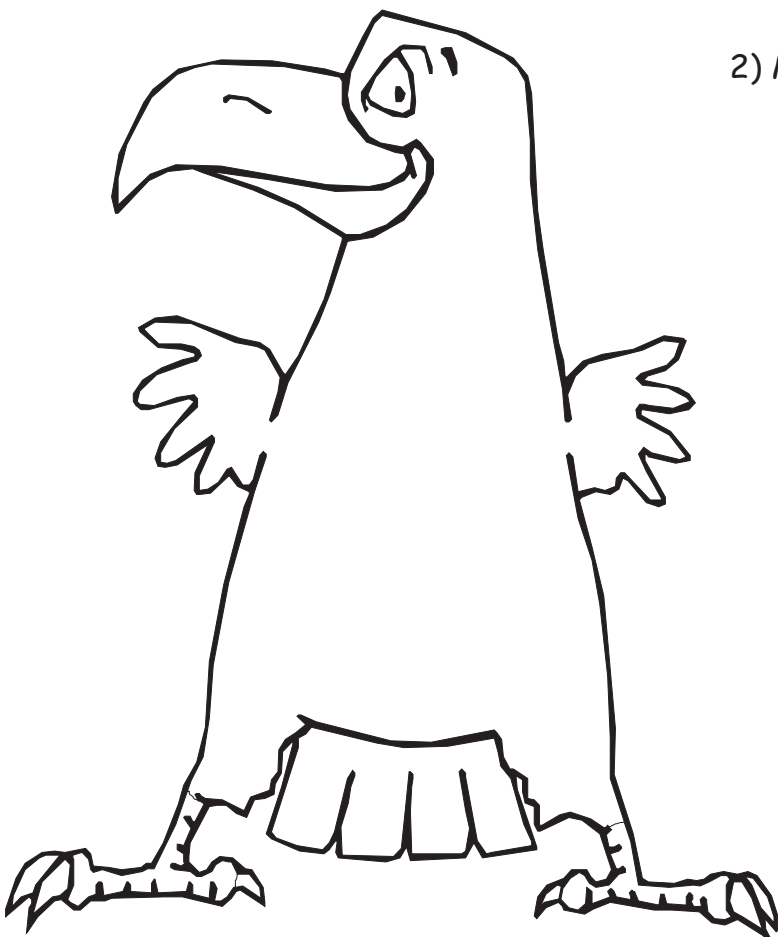
$7,477 : 6 = \underline{\hspace{2cm}}$

$99,5 : 3 = \underline{\hspace{2cm}}$

$569,8 : 6 = \underline{\hspace{2cm}}$

$94,37 : 8 = \underline{\hspace{2cm}}$

$355,13 : 3 = \underline{\hspace{2cm}}$



1) Metti in colonna e calcola con la prova:

$56,36 : 2 = \underline{\hspace{2cm}}$

$5933,4 : 8 = \underline{\hspace{2cm}}$

$4214,8 : 4 = \underline{\hspace{2cm}}$

$760,513 : 6 = \underline{\hspace{2cm}}$

$79,554 : 2 = \underline{\hspace{2cm}}$

$674,24 : 4 = \underline{\hspace{2cm}}$

$5496,324 : 3 = \underline{\hspace{2cm}}$

$43,174 : 7 = \underline{\hspace{2cm}}$

$3151,34 : 2 = \underline{\hspace{2cm}}$

$5325,7 : 5 = \underline{\hspace{2cm}}$

$54,29 : 5 = \underline{\hspace{2cm}}$

$267,8 : 2 = \underline{\hspace{2cm}}$



2) Metti in colonna e calcola con la prova:

$2,58 : 6 = \underline{\hspace{2cm}}$

$4,26 : 7 = \underline{\hspace{2cm}}$

$3,4 : 5 = \underline{\hspace{2cm}}$

$3,102 : 4 = \underline{\hspace{2cm}}$

$1,425 : 3 = \underline{\hspace{2cm}}$

$2,54 : 8 = \underline{\hspace{2cm}}$

$3,29 : 7 = \underline{\hspace{2cm}}$

$3,716 : 8 = \underline{\hspace{2cm}}$

$5,67 : 9 = \underline{\hspace{2cm}}$

$2,69 : 6 = \underline{\hspace{2cm}}$

$2,83 : 5 = \underline{\hspace{2cm}}$

$3,52 : 4 = \underline{\hspace{2cm}}$



1) Metti in colonna e calcola con la prova:

$7602 : 0,4 = \underline{\hspace{2cm}}$

$5862 : 0,06 = \underline{\hspace{2cm}}$

$2641 : 0,2 = \underline{\hspace{2cm}}$

$2610 : 0,4 = \underline{\hspace{2cm}}$

$5889 : 0,7 = \underline{\hspace{2cm}}$

$6604 : 0,6 = \underline{\hspace{2cm}}$

$2480 : 0,08 = \underline{\hspace{2cm}}$

$3010 : 0,03 = \underline{\hspace{2cm}}$

$8559 : 0,7 = \underline{\hspace{2cm}}$

$7185 : 0,7 = \underline{\hspace{2cm}}$

$6193 : 0,6 = \underline{\hspace{2cm}}$

$1754 : 0,07 = \underline{\hspace{2cm}}$



2) Metti in colonna e calcola con la prova:

$589,22 : 0,02 = \underline{\hspace{2cm}}$

$30,7 : 0,4 = \underline{\hspace{2cm}}$

$925,5 : 0,6 = \underline{\hspace{2cm}}$

$284,625 : 0,02 = \underline{\hspace{2cm}}$

$767,77 : 0,8 = \underline{\hspace{2cm}}$

$4,3 : 0,04 = \underline{\hspace{2cm}}$

$67,4 : 0,5 = \underline{\hspace{2cm}}$

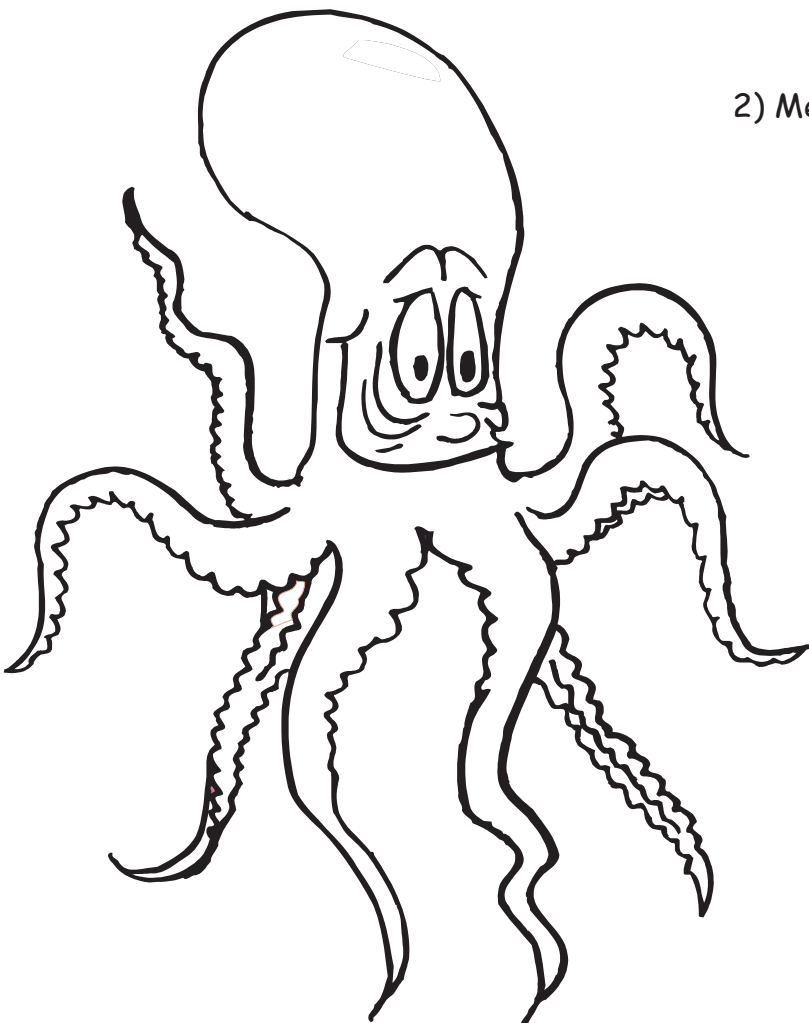
$171,349 : 0,04 = \underline{\hspace{2cm}}$

$685,451 : 0,06 = \underline{\hspace{2cm}}$

$18,21 : 0,08 = \underline{\hspace{2cm}}$

$975,75 : 0,3 = \underline{\hspace{2cm}}$

$17,834 : 0,7 = \underline{\hspace{2cm}}$



1) Metti in colonna e calcola con la prova:

$47.442 : 5 = \underline{\hspace{2cm}}$

$80.769 : 9 = \underline{\hspace{2cm}}$

$52.822 : 8 = \underline{\hspace{2cm}}$

$45.211 : 4 = \underline{\hspace{2cm}}$

$56.983 : 6 = \underline{\hspace{2cm}}$

$30.322 : 3 = \underline{\hspace{2cm}}$

$81.924 : 6 = \underline{\hspace{2cm}}$

$65.351 : 2 = \underline{\hspace{2cm}}$

$42.158 : 7 = \underline{\hspace{2cm}}$

$22.139 : 2 = \underline{\hspace{2cm}}$

$64.652 : 8 = \underline{\hspace{2cm}}$

$33.911 : 3 = \underline{\hspace{2cm}}$



2) Metti in colonna e calcola con la prova:

$65.322 : 6 = \underline{\hspace{2cm}}$

$15.729 : 4 = \underline{\hspace{2cm}}$

$43.751 : 3 = \underline{\hspace{2cm}}$

$20.263 : 6 = \underline{\hspace{2cm}}$

$72.651 : 8 = \underline{\hspace{2cm}}$

$83.181 : 2 = \underline{\hspace{2cm}}$

$34.277 : 5 = \underline{\hspace{2cm}}$

$56.021 : 6 = \underline{\hspace{2cm}}$

$43.704 : 8 = \underline{\hspace{2cm}}$

$85.717 : 9 = \underline{\hspace{2cm}}$

$81.536 : 7 = \underline{\hspace{2cm}}$

$73.809 : 2 = \underline{\hspace{2cm}}$



1) Metti in colonna e calcola con la prova:

$45.862 : 3 = \underline{\hspace{2cm}}$

$33.679 : 2 = \underline{\hspace{2cm}}$

$53.171 : 7 = \underline{\hspace{2cm}}$

$85.798 : 5 = \underline{\hspace{2cm}}$

$39.245 : 6 = \underline{\hspace{2cm}}$

$23.433 : 8 = \underline{\hspace{2cm}}$

$44.715 : 9 = \underline{\hspace{2cm}}$

$43.528 : 6 = \underline{\hspace{2cm}}$

$53.349 : 4 = \underline{\hspace{2cm}}$

$11.244 : 8 = \underline{\hspace{2cm}}$

$13.729 : 2 = \underline{\hspace{2cm}}$

$85.540 : 6 = \underline{\hspace{2cm}}$



2) Metti in colonna e calcola con la prova:



$88.352 : 6 = \underline{\hspace{2cm}}$

$22.695 : 9 = \underline{\hspace{2cm}}$

$79.455 : 2 = \underline{\hspace{2cm}}$

$48.182 : 3 = \underline{\hspace{2cm}}$

$23.120 : 7 = \underline{\hspace{2cm}}$

$80.145 : 9 = \underline{\hspace{2cm}}$

$31.691 : 8 = \underline{\hspace{2cm}}$

$75.417 : 4 = \underline{\hspace{2cm}}$

$62.306 : 5 = \underline{\hspace{2cm}}$

$19.479 : 6 = \underline{\hspace{2cm}}$

$85.550 : 8 = \underline{\hspace{2cm}}$

$18.839 : 2 = \underline{\hspace{2cm}}$

RIPASSIAMO LE DIVISIONI DECIMALI



I caso: dividendo decimale
divisore intero

$5930,7 : 69 = \underline{\hspace{2cm}}$

$193,55 : 51 = \underline{\hspace{2cm}}$

$630,13 : 65 = \underline{\hspace{2cm}}$

$586,8 : 34 = \underline{\hspace{2cm}}$

$9509,6 : 76 = \underline{\hspace{2cm}}$

$3363,7 : 48 = \underline{\hspace{2cm}}$

$232,8 : 54 = \underline{\hspace{2cm}}$

$34,8 : 13 = \underline{\hspace{2cm}}$

$3759,22 : 4 = \underline{\hspace{2cm}}$

$209,787 : 5 = \underline{\hspace{2cm}}$

II caso: dividendo decimale e
minore del divisore divisore intero

$1,114 : 58 = \underline{\hspace{2cm}}$

$32,194 : 44 = \underline{\hspace{2cm}}$

$2,8 : 4 = \underline{\hspace{2cm}}$

$1,02 : 6 = \underline{\hspace{2cm}}$

$12,272 : 59 = \underline{\hspace{2cm}}$

$19,317 : 71 = \underline{\hspace{2cm}}$

$7,102 : 91 = \underline{\hspace{2cm}}$

$36,472 : 56 = \underline{\hspace{2cm}}$

$3,38 : 5 = \underline{\hspace{2cm}}$

$11,604 : 51 = \underline{\hspace{2cm}}$

III caso: dividendo intero
divisore decimale

$9114 : 5,5 = \underline{\hspace{2cm}}$

$2659 : 8,2 = \underline{\hspace{2cm}}$

$4666 : 0,07 = \underline{\hspace{2cm}}$

$3509 : 0,07 = \underline{\hspace{2cm}}$

$305 : 2,1 = \underline{\hspace{2cm}}$

$9499 : 2,5 = \underline{\hspace{2cm}}$

$5089 : 0,06 = \underline{\hspace{2cm}}$

$3534 : 0,03 = \underline{\hspace{2cm}}$

$2855 : 6,9 = \underline{\hspace{2cm}}$

$9316 : 8,6 = \underline{\hspace{2cm}}$

IV caso: dividendo e divisore decimali

$128,49 : 6,1 = \underline{\hspace{2cm}}$

$128,2 : 8,9 = \underline{\hspace{2cm}}$

$153,6 : 4,2 = \underline{\hspace{2cm}}$

$99,319 : 0,6 = \underline{\hspace{2cm}}$

$48,516 : 2,6 = \underline{\hspace{2cm}}$

$7,774 : 2,9 = \underline{\hspace{2cm}}$

$81,11 : 7,5 = \underline{\hspace{2cm}}$

$75,6 : 0,04 = \underline{\hspace{2cm}}$

$474,342 : 3,4 = \underline{\hspace{2cm}}$

$360,6 : 0,03 = \underline{\hspace{2cm}}$

V caso: dividendo e divisore interi risultato decimale

$67 : 89 = \underline{\hspace{2cm}}$

$62 : 67 = \underline{\hspace{2cm}}$

$66 : 35 = \underline{\hspace{2cm}}$

$76 : 63 = \underline{\hspace{2cm}}$

$1 : 27 = \underline{\hspace{2cm}}$

$89 : 85 = \underline{\hspace{2cm}}$

$27 : 83 = \underline{\hspace{2cm}}$

$34 : 86 = \underline{\hspace{2cm}}$

$41 : 35 = \underline{\hspace{2cm}}$

$51 : 67 = \underline{\hspace{2cm}}$