

Prepositions Of Places

A) Look at the following picture. Then, complete the tasks below. Share your answer.



Picture made by: Lic. Juan Diego Guzmán V.

Instructions: Locate the following places by writing the correct prepositions.

Far from / next to / in / behind / opposite / across from / between / close / in front of /

1. The Clothing Store is _____ the post office and Police station.
2. The bus station is _____ Movie Theater.
3. Supermarket is _____ drugstore.
4. The School is _____ the bus station.
5. The park is _____ the city.
6. The butchery is _____ the bookstore.
7. The bookstore is _____ the bank.
8. The Movie Theater is _____ the Post Office.
9. The school is _____ the Supermarket and the hospital.
10. The butchery is _____ the Movie Theater.



PREPOSITIONS OF PLACE:

IN-ON-UNDER-BEHIND-NEXT TO BETWEEN

1-THE BOOKS AND THE
CRAYONS ARE.....
THE SCHOOL BAG



2-THE BIN IS
THE DESK



3-THE BOARD IS
THE CHAIR



4-THE RULER IS
THE BOOK



5-THE CRAYONS ARE
.....THE BOX



6-THE COPYBOOK IS
.....THE BOOKS AND
THE PENCILS



7-THE PENCIL IS
THE DIARY



8-THE ERASER IS
.....THE CALCULATOR
AND THE PENCIL



9-THE GLOBE IS
THE DESK



10-THE ERASER AND
THE SHARPENER ARE
.....THE PENCIL-
CASE



11-THE GLUE IS
THE PENCIL AND THE
CALCULATOR



12-THE SCISSORS ARE
.....THE CARD



13-THE RULER IS
THE ERASER



14-THE PENCIL IS
.....THE LAMP





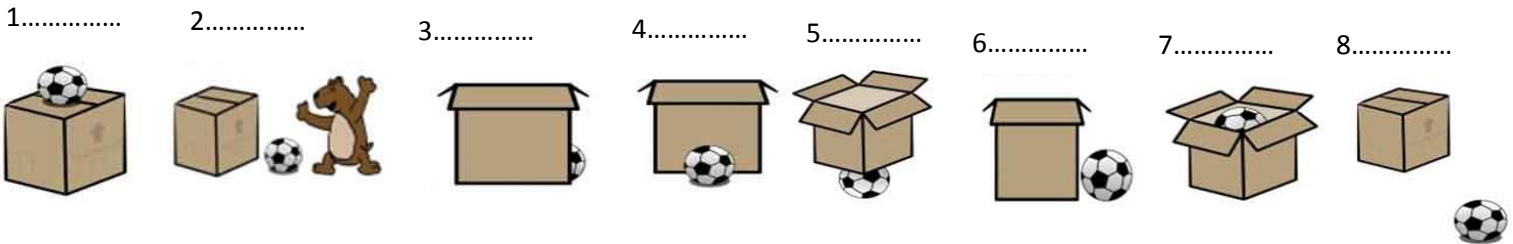
ENGLISH EXAM

NAME:.....

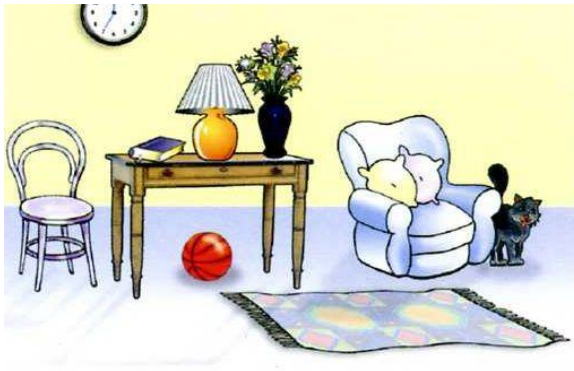
GRADE: 2nd

DATE:

1. LOOK AT THE PICTURE AND WRITE THE PREPOSITIONS OF PLACE



3. Now write the prepositions of place according to the picture



- 1) The clock isthe wall.
- 2) The ball isthe table.
- 3) The cat isthe armchair.
- 4) The table isthe armchair.
- 5) The carpet isthe floor.
- 6) The lamp isthe table.
- 7) The flowers arethe vase.
- 8) The table isthe chair and the armchair.

2. Now write at least four sentences looking at the picture below.



.....

.....

.....

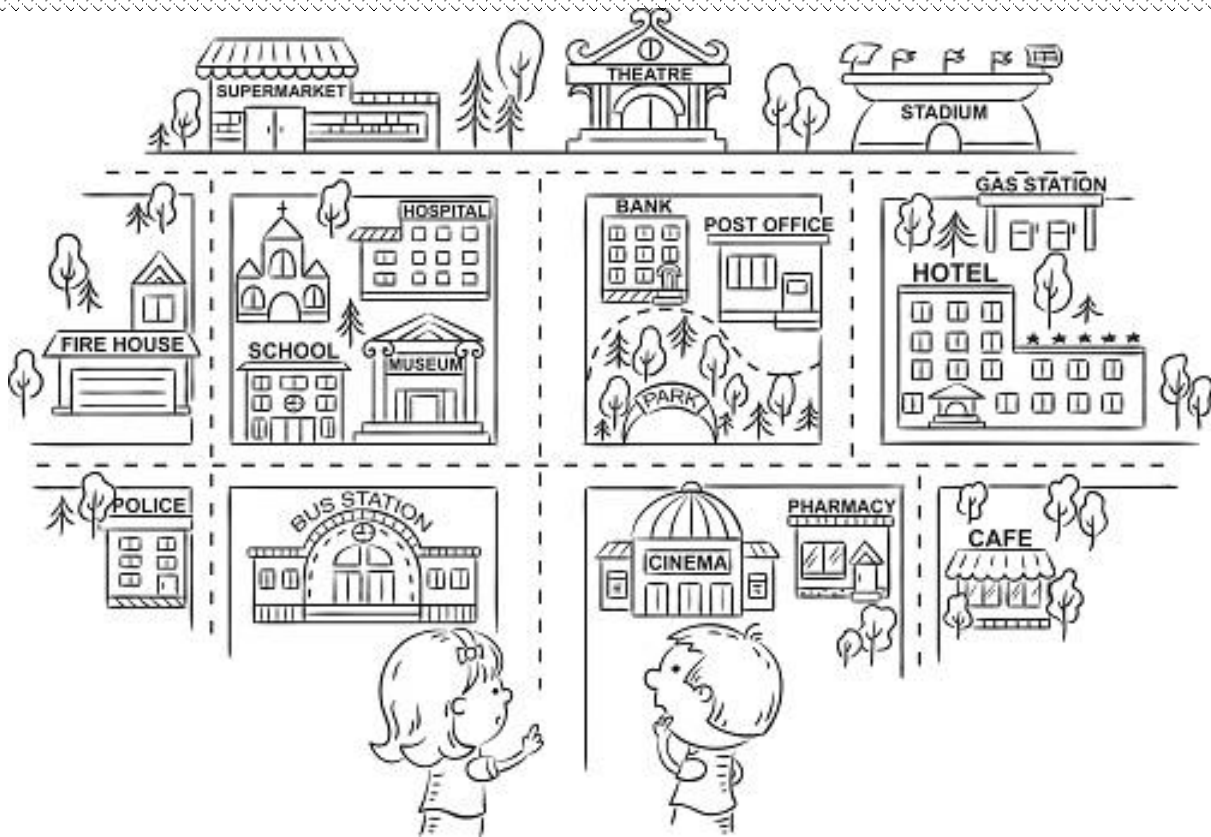
.....

PREPOSITIONS

Look at the following pictures and match them with the corresponding preposition in the box below by writing the numbers in the parenthesis.



- () among
- () far from
- () near
- () between
- () next to
- () in
- () above
- () in front of
- () behind
- () on



in front of opposite behind next to between

The bus station is _____ the police station and the cinema.

The school is _____ the museum.

The gas station is _____ the hotel.

The theatre is _____ the supermarket and the stadium.

The park is _____ the bank.

The hospital is _____ the museum.

The supermarket is _____ the theatre.

The stadium is _____ the gas station.

The church is _____ the school.

The post office is _____ the bank.

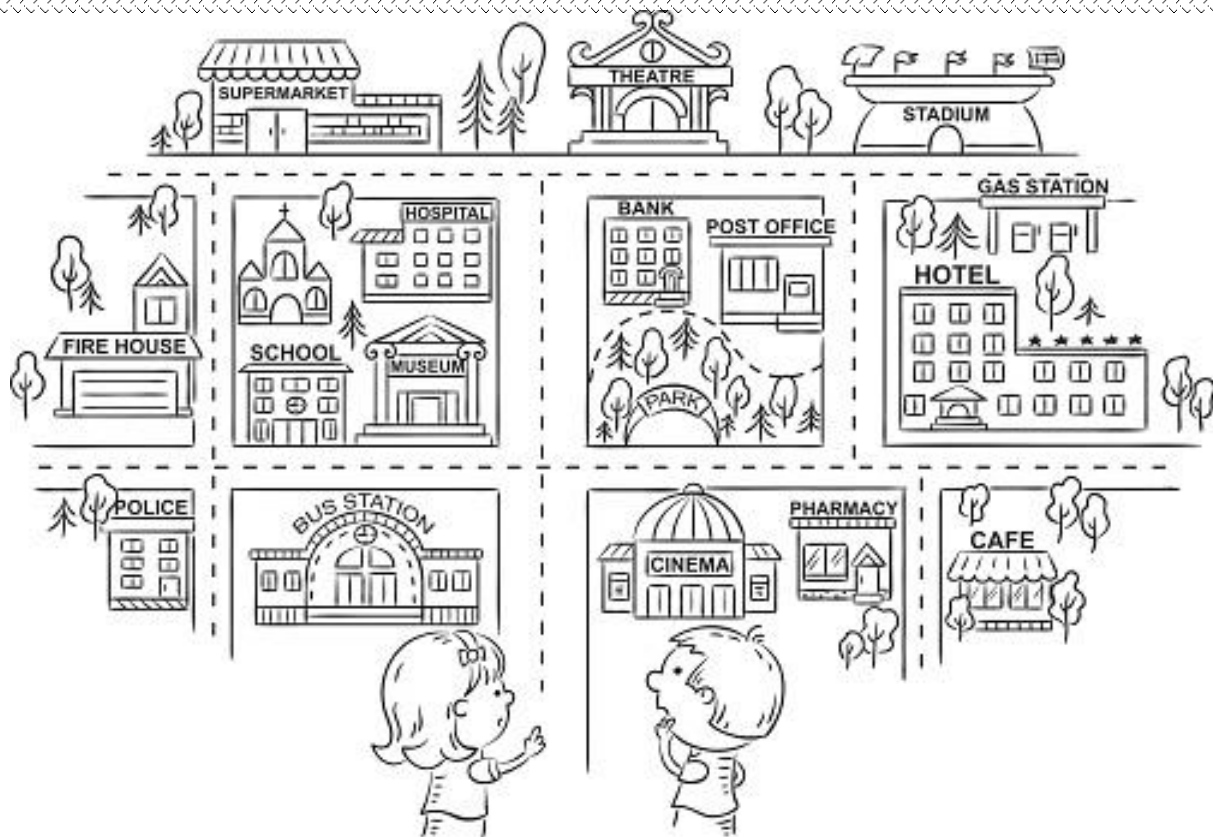
The café is _____ the hotel.

The pharmacy is _____ the cinema and the café.

The school is _____ the church.

The post office is _____ the park.

The museum is _____ the hospital.



The bus station is between the police station and the cinema.

The school is next to the museum.

The gas station is behind the hotel.

The theatre is between the supermarket and the stadium.

The park is in front of the bank.

The hospital is behind the museum.

The supermarket is next to the theatre.

The stadium is opposite the gas station.

The church is behind the school.

The post office is next to the bank.

The café is opposite the hotel.

The pharmacy is between the cinema and the café.

The school is in front of the church.

The post office is behind the park.

The museum is in front of the hospital.